

マングレー工業団地 調査報告

名城大学 経済学部 佐土井有里

内容

- マンダレー地区 工場見学報告
- マンダレー調査案
- ミャンマー・ジャパンセンター同窓会との活動案

Mandalay Industrial Zone Management Committee

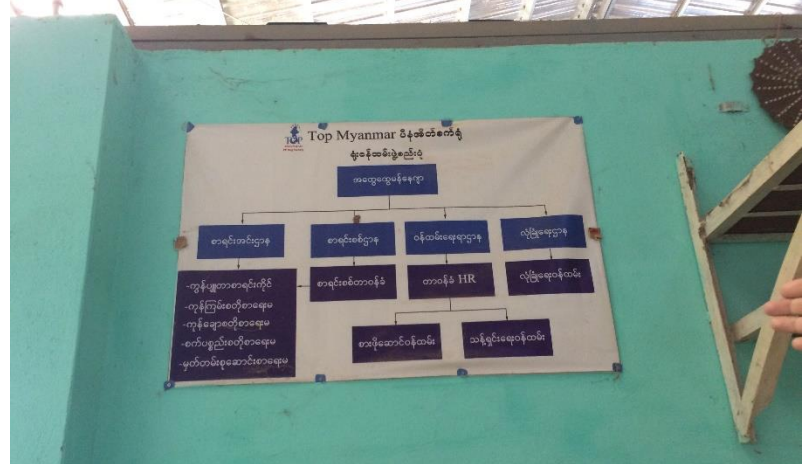
2016年3月調査訪問

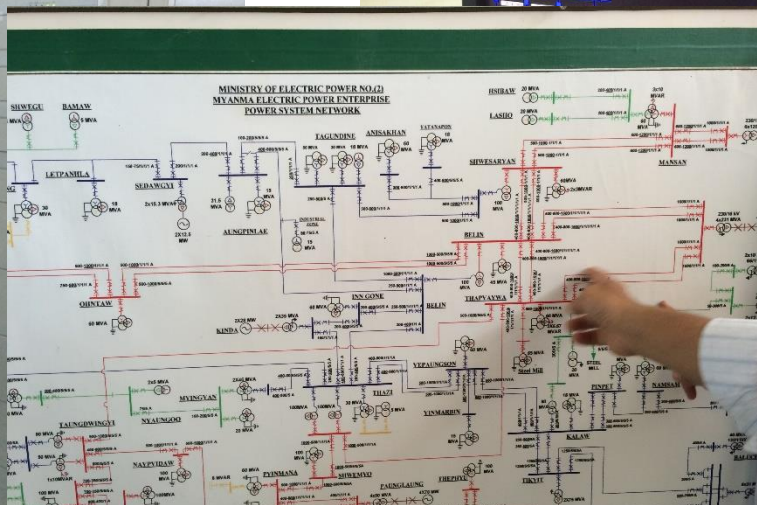
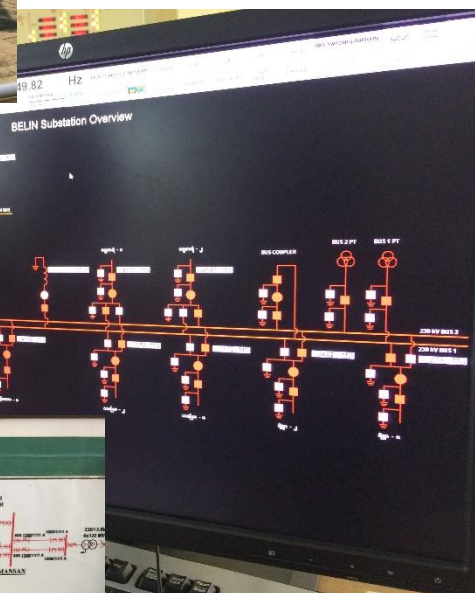
- CYT Co. Ltd (textile)
- Good Brother (Agriculture vehicle)
- Diamond Star (cookies)
- Mother food staff (cookies)
- Myanmar May Kaung (Furniture, woods)
- Diamonds and Emerald (Mattress and furniture)
- Top Myanmar (plastic woven bags)
- Moe Ma Kha (Recycled Paper)

紡績



A photograph of a warehouse interior. The floor is dark and polished. The walls are a light green color. The ceiling is made of corrugated metal with visible structural beams. In the center of the room, there are several large stacks of white sacks, likely containing cement or a similar material. The sacks are stacked in a way that creates a sense of depth. In the background, there are some windows and a small structure. On the left side of the image, there is a vertical strip showing a close-up of a white, textured surface, possibly a wall or a piece of fabric.

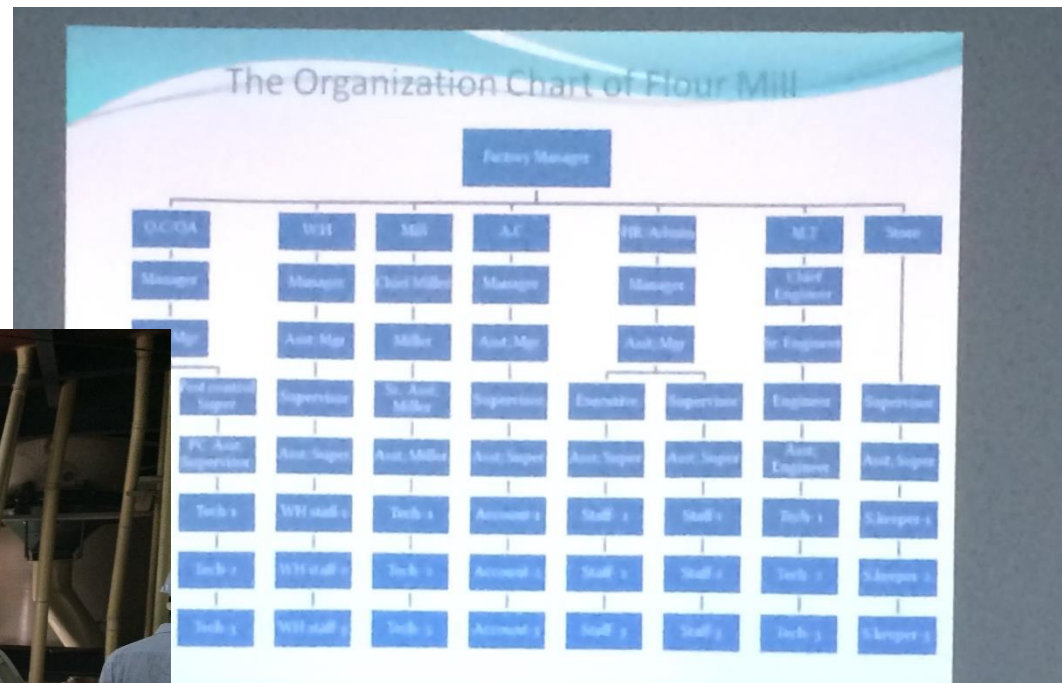




農機部品



製粉



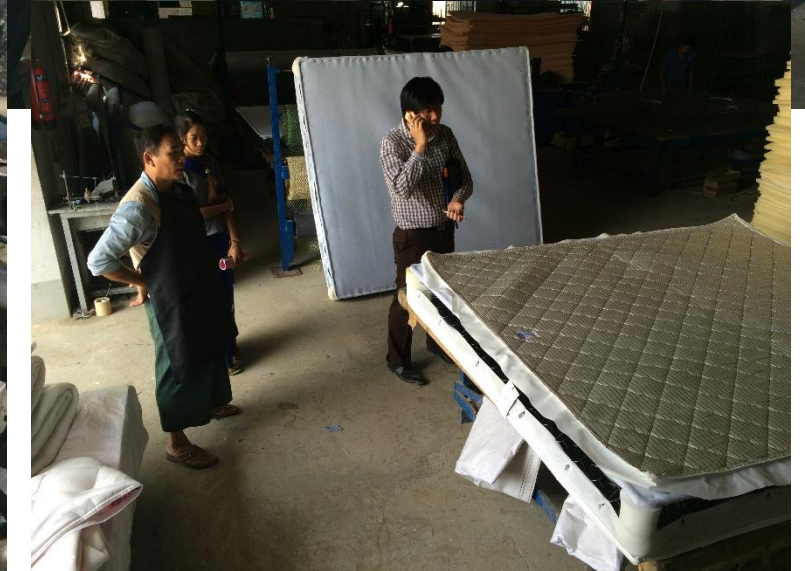
冷間鍛造



再生紙



マットレス



木材・家具



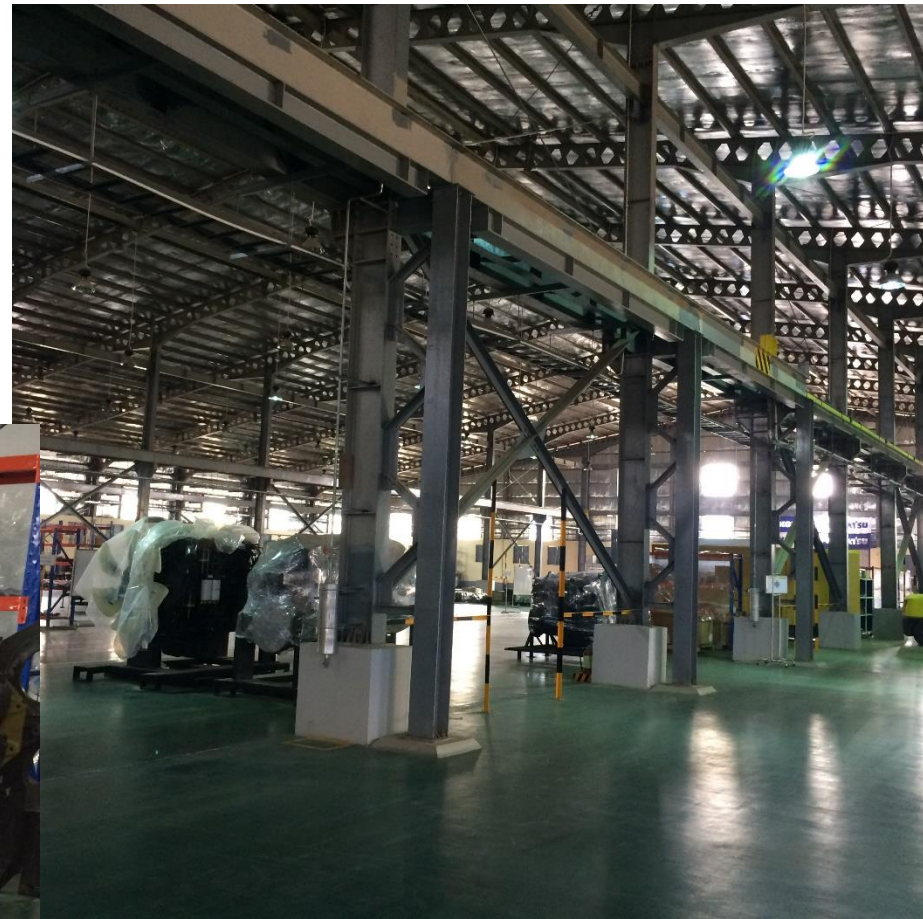
菓子 1



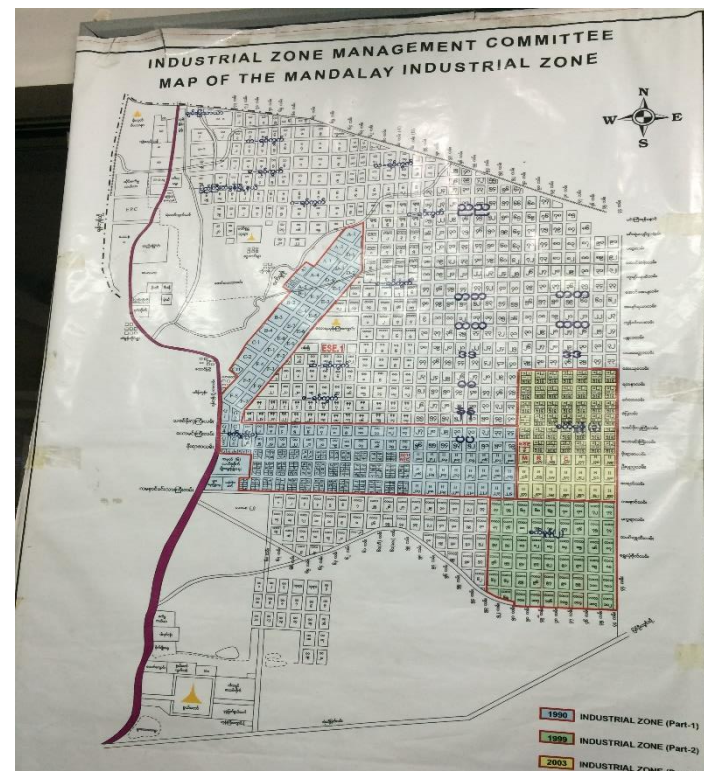
菓子 2



KOMATSU



Mandalay Industrial Zone Management Committee セミナー・勉強会



Myotha Industrial Park

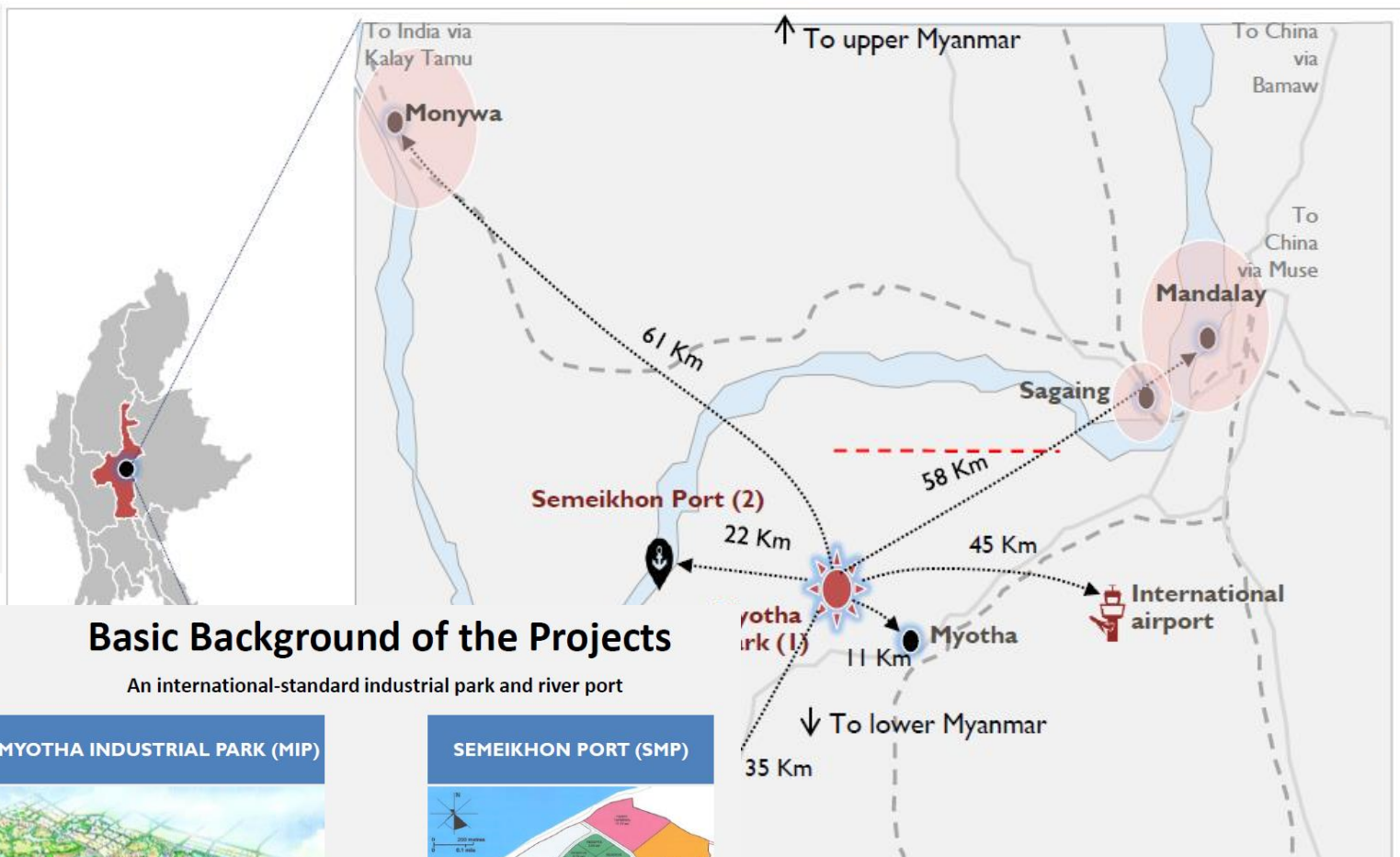
Location of MIP and SMP



Strategically located within reach of China and India trading routes

MIP is located 58km southwest of Mandalay City and 45 km from Mandalay international airport.

This location is strategically placed and easily accessible for all industrial and economic activities in the region.



Basic Background of the Projects

An international-standard industrial park and river port

